

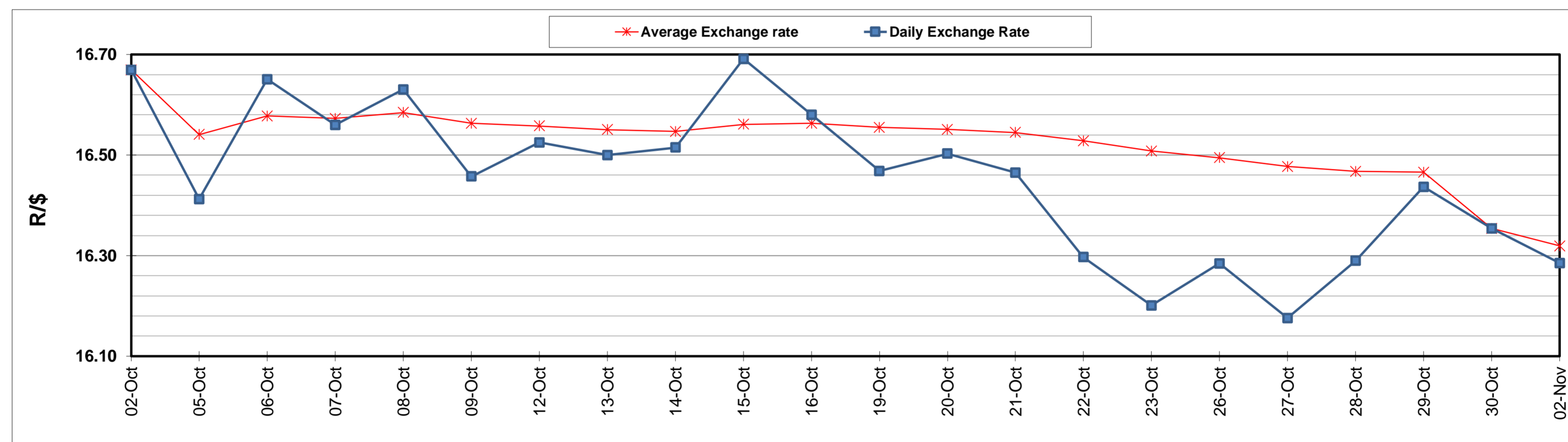
	PETROL 95 ULP	PETROL 93 ULP & LRP	DIESEL 0.05%	DIESEL 0.005%	ILL. PAR.
GAUTENG PUMP PRICE (SA c/l) AS FROM 04/11/2020	1,459.000	1,439.000	-	-	-
WHOLESALE PRICE (SA c/l) AS FROM 04/11/2020	-	-	1,225.560	1,227.960	655.828
SINGLE NATIONAL MAXIMUM RETAIL PRICE	-	-	-	-	818.000
BASIC FUEL PRICE - 02/11/2020 (SA c/l)	450.726	443.880	440.037	443.976	420.412
PRESS RELEASE CONTRIBUTION TO BFP 30/10/2020 - 02/11/2020 (SA c/l)	533.470	523.470	486.630	488.030	436.128
UNIT OVER/(UNDER) RECOVERY - 02/11/2020 (SA c/l)	82.744	79.590	46.593	44.054	15.716
AVERAGE BASIC FUEL PRICE 30/10/2020 - 02/11/2020	454.978	448.118	444.480	448.304	425.465
AVERAGE UNIT OVER/(UNDER) RECOVERY 30/10/2020 - 02/11/2020	78.493	75.352	42.150	39.727	10.664

### ANALYSIS MOVEMENT OF AVERAGE OVER/(UNDER) RECOVERY

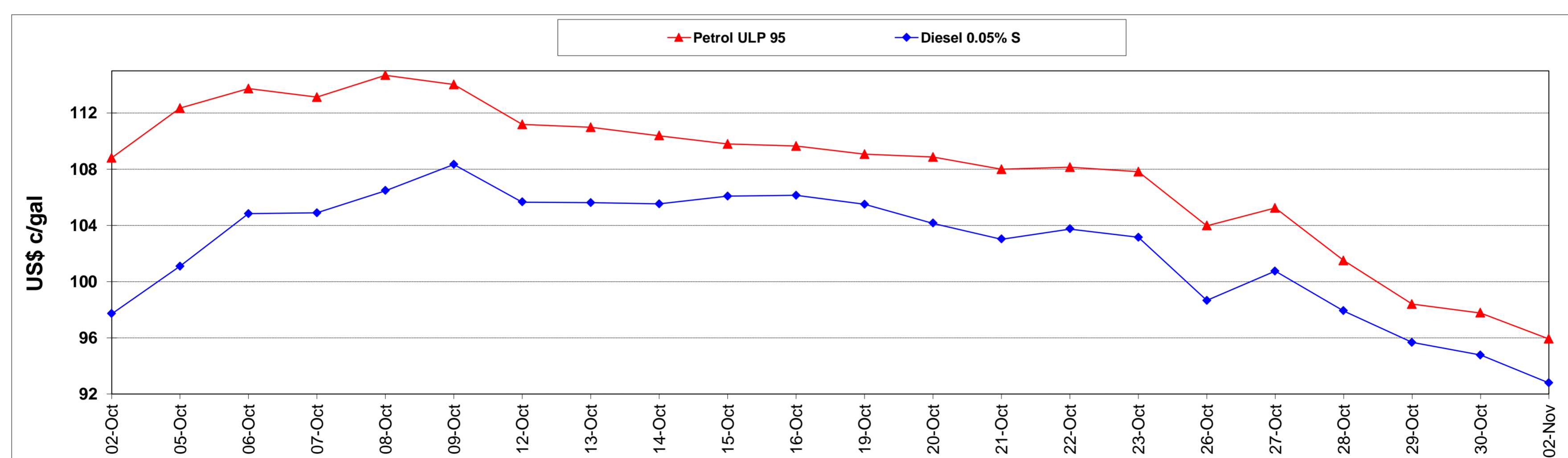
	PETROL 95	PETROL 93	DIESEL 0.05%	DIESEL 0.005%	ILL. PAR.
- MOVEMENT IN INTERNATIONAL PRODUCT PRICES	74.416	71.337	38.168	35.710	6.851
- MOVEMENT IN EXCHANGE RATE	4.076	4.015	3.982	4.016	3.812
AVERAGE UNIT OVER/(UNDER) RECOVERY 30/10/2020 - 02/11/2020	78.493	75.352	42.150	39.727	10.664

R/\$ EXCHANGE RATE - (R/\$16.2850 - 02/11/2020)

### EXCHANGE RATE USED IN BASIC FUEL PRICE



### INTERNATIONAL PRODUCT PRICES OF BASKET USED IN BASIC FUEL PRICE



### BASIC FUEL PRICE IN SA CENTS PER LITRE

